

845-745 LOCK

1 TOP COVER DEVICE (Exclusive for 845)
The Top Cover measures 5.0 mm or 2.5 mm in width. It uses two or three needles, top cover "hook" and the chain looper to form a cover hem with loops on both the top and bottom side of the fabric.

2 TILTING NEEDLE CLAMP (Exclusive for 745)
An exclusive feature - tilt up the needle clamp to easily remove and insert needles without dropping them into the machine.

3 PROGRAM DISPLAY PANEL
Select a stitch and the tensions are automatically set. At the same time, see a condensed version of the instruction manual.

4 2-THREAD CONVERTER
Eliminate the upper looper thread for 2 thread rolled hems, flatlocking or stretch wrapped. It's built-in so there's nothing to misplace.

5 INSTANT ROLLED HEM
No need to change the plate. Simply flip the lever and you're ready to sew beautiful rolled hems.

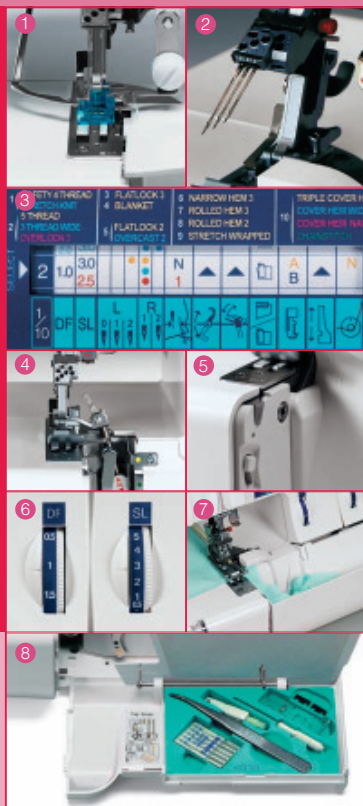
6 DIFFERENTIAL FEED AND STITCH LENGTH SETTINGS
Easy to set and read dials, conveniently located right on the front of the machine.

7 WASTE TRAY
Helps keep your sewing area tidy - it catches those loose scraps and trimmed threads.

8 ACCESSORY BOX
The most frequently used accessories/tools are stored in the front cover for easy access.

OVERLOCK FEATURES

- Automatic tensions
- EXCLUSIVE Top cover stitch (only 845)
- Program display panel
- EXCLUSIVE Tilting needle clamp (only 745)
- Instant rolled hem device
- Built-in 2-thread converter
- Differential feed (0.5 - 2)
- Stitch length (0.5 - 5)
- Adjustable cutting width (7 mm overlock)
- Color coded for easy threading
- Lower looper and chain looper disengage for easy threading
- Cutting blade - up, down or locked for heavy fabrics
- Extra presser foot lift
- Tension release lever
- Adjustable foot pressure
- Safety systems
- Electronic foot control
- Clear foot F
- Quilting guide
- Waste tray
- Dust cover
- Large choice of optional accessories



Printed in Switzerland - Subject to change without notice - 390055402



elna
SWISS DESIGN

845-745 LOCK

A powerful attraction



elna
SWISS DESIGN

WARRANTY AND SERVICE:

Elna's superior reputation was established in 1940 with the production of its first sewing machine. Ever since, Elna has continued to be a leading brand of home sewing and related equipment especially designed with the innovative sewer in mind. Thousands of professionals worldwide provide expert service. Millions of people have chosen Elna for its quality, performance and reliability.

www.elna.com

The Elna 845-745 overlock is the perfect complement to your sewing

5 THREAD

For stable and durable finished seams - the industry standard.

The easy-to-use Elna 845 and the Elna 745 give you professionally finished seams, quickly sewing and trimming at the same time. You have a choice of a wide range of built-in stitches, too. The 845 model offers a new feature – top cover hem stitch. Now you can sew three different widths of top covers (triple, wide and narrow) showing covering loops on both sides of the fabric.

SAFETY 4 THREAD AND STRETCH KNIT

Great for seams that need to move with your body (a swimsuit) without breaking or losing their original shape.



OVERLOCK 3

Finish an edge or just sew over ribbons to create decorative braiding.

NEW

TOP COVER HEM

This special stitch is for hemming stretch fabrics and for decorative effects. Three different width (triple, wide and narrow).

THREE COVER HEMS

When a stretchy hem or stretchy topstitching is a must. Triple, wide, narrow.

NEW

BLANKET

Attractively edge finish a single layer of fabric - a blanket or felted scarf, for example.



FLATLOCK 2

Not only for exposed seams on sweatshirts - use it for a lacy effect (fagoting).

ROLLED HEM 3

A superior hemming method for delicate ruffles and sheer fabrics.

CHAINSTITCH

Two threads for sturdy seams. Or simply remove the fabric and let the machine chain off, making enough to form a tassel.

